



M

MOVE INN ESTATES

MAKING THE RIGHT MOVE

31, Middlewich House

Taywood Road Northolt, UB5 6GF

Offers In The Region Of £269,000

DESCRIPTION



Welcome to this beautifully presented two double bedroom apartment located in the picturesque Grand Union Village. Boasting stunning views of the Grand Union Canal Marina, this property offers an exceptional living experience in a highly sought-after location.

As you step inside, you'll immediately notice the impeccable condition of this apartment. The tastefully decorated living room welcomes you with its spacious layout, providing the perfect space for relaxation and entertaining guests. Natural light floods the room, creating a warm and inviting atmosphere.

Adjacent to the living room, you'll find a modern kitchen that has been thoughtfully designed to offer both functionality and style. With sleek countertops, ample storage space, and high-quality appliances, preparing meals will be a joy in this well-appointed kitchen.

The apartment features two generously sized double bedrooms, each offering a comfortable retreat for a good night's sleep. One of the bedrooms benefits from an en-suite shower, ensuring convenience and privacy. Additionally, there is a family bathroom available for the residents and guests, complete with modern fixtures and fittings.

Storage space is plentiful throughout the property, allowing for easy organization and a clutter-free living environment. Double doors from the living room lead to a private patio area, where you can enjoy peaceful moments while taking in the captivating views of the Grand Union Canal Marina.

Additional advantages of this apartment include gas central heating, double glazing to ensure energy efficiency and sound insulation, an intercom system for enhanced security, and the convenience of underground parking facilities. With a long lease in place, you can enjoy the benefits of long-term residency and stability.

Situated in the heart of Grand Union Village, this apartment offers not only a comfortable and stylish living space but also the tranquility and charm of the surrounding area.



EXECUTIVE SUMMARY

- Beautifully presented 2 double bedroom apartment in Grand Union Village
- Stunning views of the Grand Union Canal Marina
- Spacious, light-filled living room perfect for relaxing or entertaining
- Modern fitted kitchen with high-quality appliances and ample storage
- Main bedroom with en-suite shower plus a stylish family bathroom
- Private patio area with direct marina views
- Ample storage throughout for a clutter-free home
- Includes gas central heating, double glazing, and intercom system
- Underground parking and long lease for long-term convenience
- Located in a tranquil, highly sought-after area close to local amenities

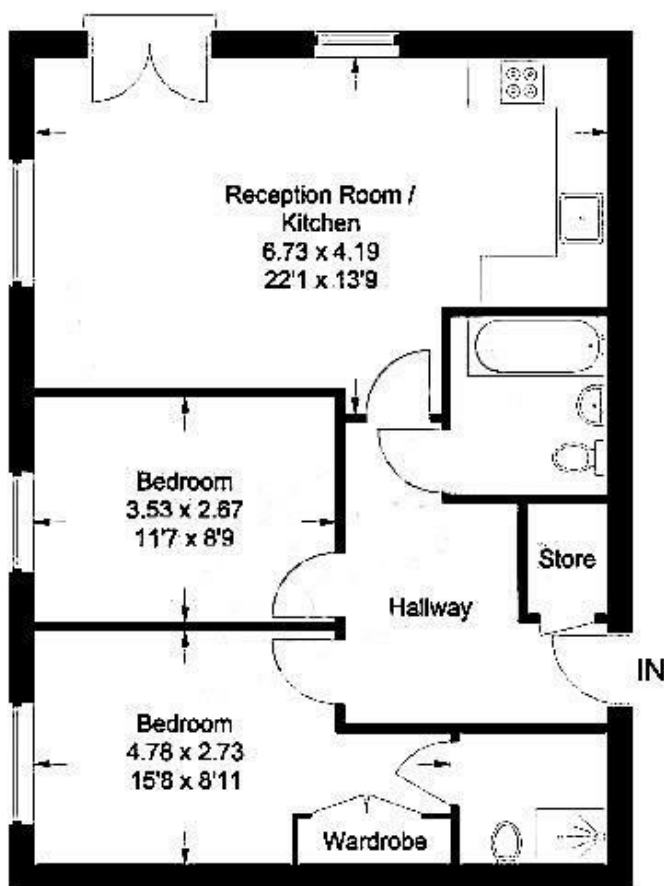




Floor Plan

Middlewich House

Approximate Gross Internal Area = 64.5 sq m / 694 sq ft



Third Floor

This plan is for layout guidance only. Not drawn to scale unless stated. Windows and door openings are approximate. Whilst every care is taken in the preparation of this plan, please check all dimensions, shapes and compass bearings before making any decisions reliant upon them.
© CJ Property Marketing Ltd Produced for Bennett Holmes

Viewing

Please contact our Move Inn Estates - Sales Office on 0208 574 4966 if you wish to arrange a viewing appointment for this property or require further information.

These particulars, whilst believed to be accurate are set out as a general outline only for guidance and do not constitute any part of an offer or contract. Intending purchasers should not rely on them as statements of representation of fact, but must satisfy themselves by inspection or otherwise as to their accuracy. No person in this firm's employment has the authority to make or give any representation or warranty in respect of the property.

46 Vicarage Farm Road, Hounslow, Middlesex, TW5 0AB

Tel: 0208 574 4966 Email: info@moveinnestates.co.uk www.moveinnestates.co.uk